

KING HOUSE  
EXHIBITION



BOYLE CIVIC ART COLLECTION 2020-2023



**Anna Linnane** *Flagbird* BRONZE  
(Acquired 2007) 200x41x13cm

Exhibition Curator: **Conor Dowling**  
Catalogue Layout: **Deirdre O'Reilly**



KING HOUSE EXHIBITION

## FOREWORD

From humble beginnings - two pieces purchased in 1990 by Fergus Ahern and Barry Feely, Boyle Civic Art Collection now comprises almost 300 artworks, representing the best of contemporary Irish painting and sculpture. The majority of works were acquired using the sales commission earned at Boyle Arts Festival Exhibitions 1990 to 2012. Several pieces were donated by the Haverty Trust, Friends of the National Collections of Ireland, The Contemporary Irish Art Society and the artists themselves. A number of pieces were also donated by private collectors.

The Civic Art Collection is maintained by the trustees for the people of Boyle and, thanks to Roscommon County Council, is housed mainly in King House where the collection is rotated in the available gallery spaces. Works are also on loan for exhibition in numerous public buildings in the town, such as Boyle Credit Union, Abbey Community College, Boyle Enterprise Centre, nursing homes and Boyle Primary Care Centre.

Fergus Ahern was the original curator and driving force of the collection until his untimely death in 2010. Barry Feely then took over in 2011, during which time we formed a committee who in turn set-up the Trust.

The trustees have worked with other galleries to curate selections from the Collection including the Royal Hibernian Academy Dublin (2014), Solas Art Gallery, Co. Leitrim (2013), Creative Connexions Festival, Sitges, Spain (2013) and Roscommon Arts Centre (2012). The trust is currently chaired by Marian Ahern, with Conor Dowling curating the collection.

In this current exhibition, selected by Conor Dowling, the outstanding pieces in my opinion and from my experience with the collection over the years are by the artists Colin Davidson, Nick Miller, Malachy Costello, Simon Williams, Joseph Williams, Brian Ballard, Pat Harris, Michael Farrell, Barrie Cooke, Noel Murphy, William Crozier and John Shinnors; and sculptors Conor Fallon, John Behan, Caroline Mulholland, Alexandra Wejchert, John Cohen and Patrick Reilly.

**Barry Feely**

*November 2020*



**Tim Shaw**  
*Onlooker*  
BRONZE  
(Acquired 2008)  
64x27cm



KING HOUSE EXHIBITION

## INTRODUCTION

From its inception in 1990, the Boyle Civic Art Collection, totalling almost 300 pieces of contemporary Irish artworks, has grown to be widely considered one of the most important civic art collections in the country. Innovative for its time, the vision from the outset was to engage local citizens in the visual arts by providing a collection of modern Irish artworks, accessible in their immediate environment. The founders, Fergus Ahern and Barry Feely, saw no reason why a small town in the west of Ireland could not build a collection of national importance. Inherent to their vision was that this collection would be owned by the people of Boyle for the people of Boyle, making this collection of contemporary Irish artworks accessible to all. All artists in the Collection are all either Irish born or Irish resident. All were living at the time their respective works were acquired.

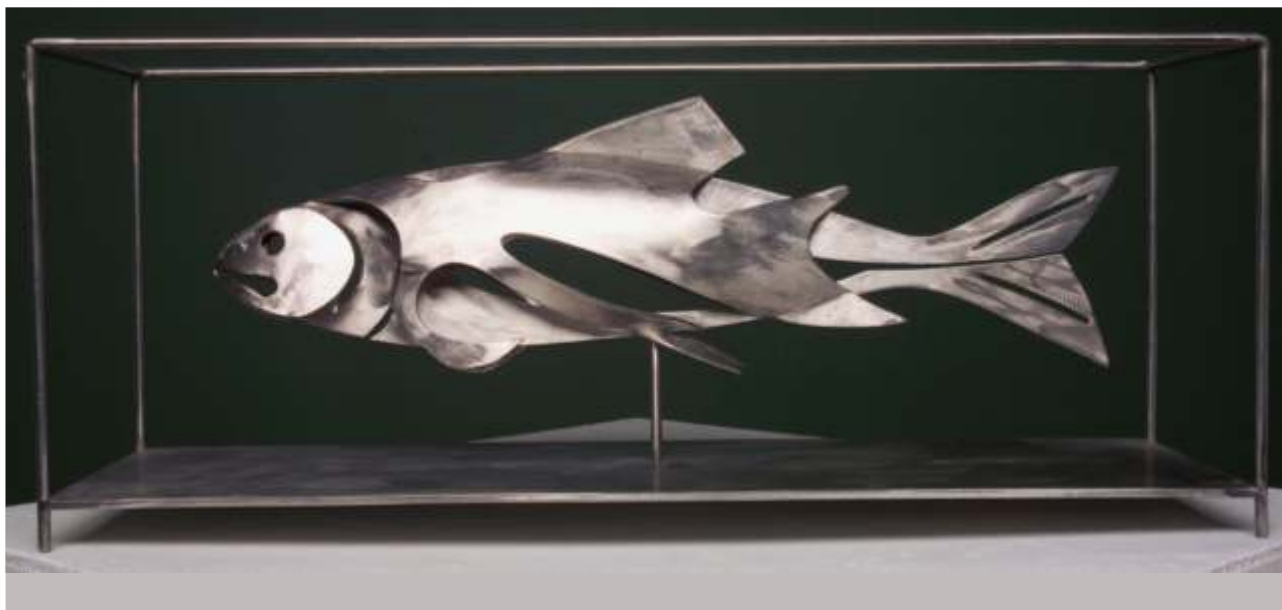
Steadfast in this spirit, the collection is on display throughout the year in King House and multiple buildings in the town of Boyle, sustaining a deep rooted presence of highly regarded visual arts in the town. This resulting presence and respect for the visual arts can be felt not just in the town of Boyle but across the arts community nationally. Through relationships developed as part of both the Boyle Arts Festival and the Boyle Civic Collection many Irish artists continue to remain deeply connected to Boyle, these connections driving a sustained interest in the arts locally.

The current exhibition presents 91 pieces of both sculpture and painting, showcasing a broad range of artworks and media, and the best of contemporary Irish artists, capturing the essence of the Boyle Civic Art Collection.

**Marian Ahern**

Chairperson

November 2020



**Conor Fallon** *Specimen Fish* STAINLESS STEEL [1/1] (Acquired 1994) 35x20cm



**Eoin MacLochlainn** *Awakening II* OIL ON CANVAS 81x90cm (Acquired 2008)



**Louis le Brocquy** *Procession with Lilies III* LITHOGRAPH [37/75] 55 x 70cm (Acquired 1992)





**Marc Reilly** *Untitled* ACRYLIC  
Donated by Gwen Woods (Acquired 2012) 103 x 137cm



**Joe Hanly** *Square Web II* ETCHING  
(Acquired 2005) 76 x 76 cm

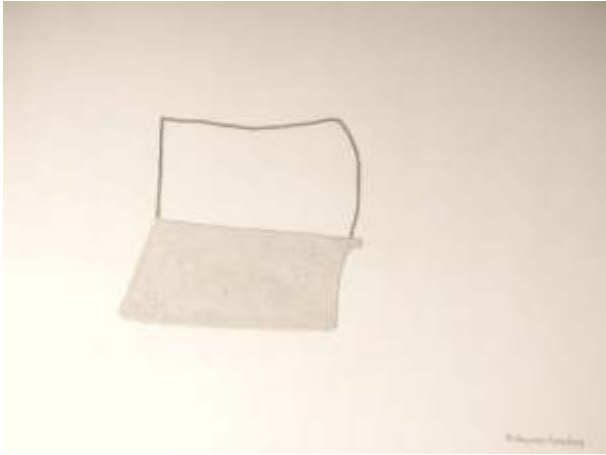


**Patrick Pye** *The Baptism of Christ* ETCHING [13/50]  
Donated by the artist (Acquired 2012) 79x 56cm



**John Behan** *Dancing Rabbis* BRONZE [1/1]  
(Acquired 2000) 32 x 77cm

BOYLE CIVIC ART COLLECTION 2020-2023



**Maria Simonds Gooding**

*Donated by The Haverly Trust*

*Harvest and Boundary Walls*

MIXED MEDIA

*(Acquired 2003)*

115x80cm



**Joe Dunne**

*Winter Ballycastle*  
*(Acquired 2004)*

EGG TEMPURA ON PAPER  
57x76cm



**Linda Ruttelynch**

*Field of Drawing*  
*(Acquired 2001)*

ETCHING  
82x100cm



**John McNulty**

*Barn with Shed II*  
*(Acquired 2007)*

ETCHING [1/15]  
58x78cm





**Katherine  
Boucher Beug**

*Noah's Dog III*  
ACRYLIC AND CHARCOAL BFK REEVES  
(Acquired 2008) 77x57cm



**John Moore**

*Heaven Comes Down*  
(Acquired 1990) OIL ON CANVAS  
151x150cm



**Michael Cullen**

*The Day the Painters Came*  
WATERCOLOUR ON HANDMADE PAPER  
(Acquired 2001) 54x75cm



**Imogen Stuart**

*Methos*  
(Acquired 2006) BRONZE [2/7]  
46x26x5cm



**Patrick O'Reilly**

*Bird in Moorland*  
(Acquired 2003)

BRONZE [1/1]  
26x96 cm



**Carolyn Mulholland**

*Figure Turning*  
BRONZE [1/1]  
(Acquired 1993)  
46x25 cm



**Mary Burke**

*Merrion Square*

OIL PASTEL

(Acquired 1999)

51x75cm



**Joe Hanley**

*Between You and Me*  
(Acquired 1990)

OIL ON CANVAS  
167x150cm



**Nick Miller**

*Island, Lough Key*  
(Acquired 1998)

OIL ON LINEN  
76x80cm



**Sean McSweeney**  
Donated by the artist

*Bogland Sligo*  
(Acquired 1992)

OIL ON BOARD  
34x45cm



**Eithne Jordan**  
Donated by the Irish  
Contemporary Art Society 2005

*Warehouse with Bus*  
(Acquired 2005)

OIL ON LINEN  
32x40cm





**Mary Therese Keown**

*The Old Town*

OIL ON CANVAS

(Acquired 2003)

130x33cm



**Colin Davidson**

*Churchyard Tree*  
(Acquired 2004)

OIL ON CANVAS  
122x153cm



**Breon O'Casey**

*Cockerel*  
(Acquired 2003)

MIXED MEDIUM  
58x60cm



**Malachy Costello** *Winter Field and Trees near Croghan*  
OIL ON CANVAS  
110 x 100cm  
(Acquired 2013)



**Trevor Geoghegan** *Twin Erratics*  
ACRYLIC ON PANEL  
40x40cm  
(Acquired 1992)



**Alexandra Weichert**  
*Organic Form* PLEXIGLASS  
8x85cm  
(Acquired 1991)



**Terry McAllister** [Detail] *Chesil Beach Dorset* CHARCOAL ON PAPER  
127x90cm  
(Acquired 2012)  
Donated by Gwen Woods





**Willie Evesson** *Persian Dream* OIL ON CANVAS  
(Acquired 2008) 120x91cm



**Neil Greig** *Glaslough* OIL ON CANVAS  
(Acquired 2002) 182 x122cm

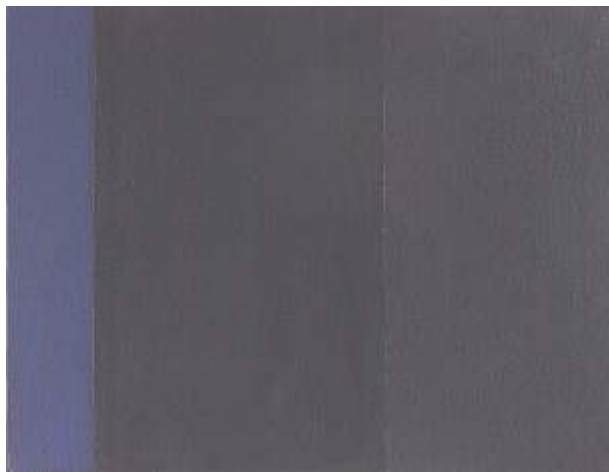


**Eamon Coleman** *Nell Boyde Land* OIL ON CANVAS  
(Acquired 1991) 45x50 cm



**Raphael Hynes** *Mandarin and Glass* OIL ON CANVAS  
(Acquired 2005) 38x38 cm

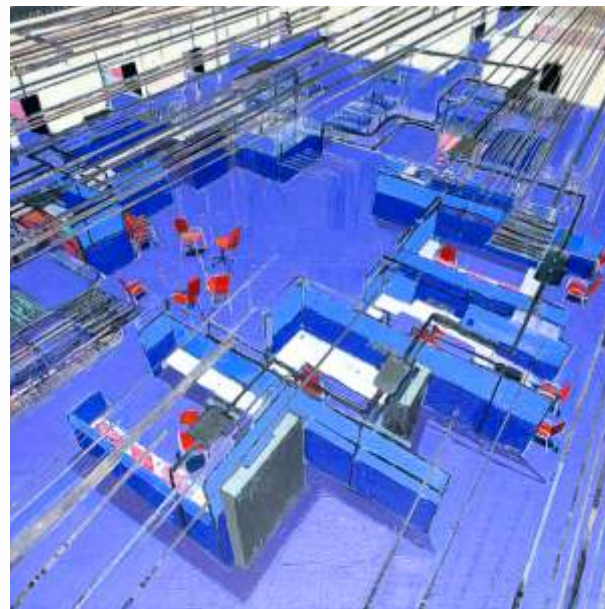




**Sarah Iremonger**

Purple  
(Acquired 1994)

OIL ON CANVAS  
28x35cm



**Simon McWilliams**

Office Ceiling  
(Acquired 2006)

OIL ON CANVAS  
145x175cm



**John Behan**

*Famine Family*  
COPPER AND STEEL [1/1]  
(Acquired 1997)  
87x40cm

**Robin Buick**

*Aoife II* BRONZE  
(Acquired 1994)  
50x20x20cm





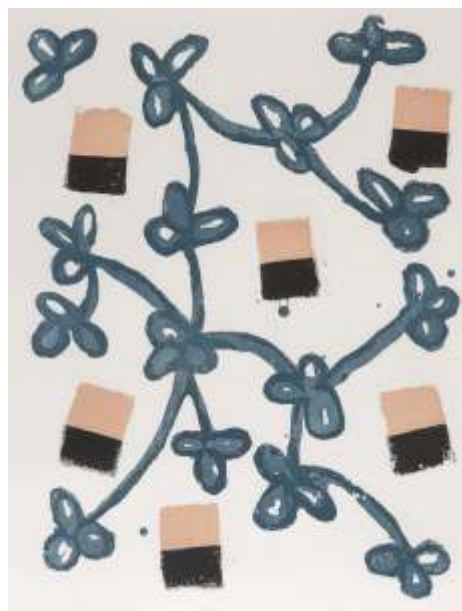
**Cherith McKinstry** *Farmhouse Evening* OIL ON CARD  
(Acquired 2002) 30x29cm



**Michael O'Dea** *Backbone* MIXED MEDIA  
(Acquired 2003) 16x30cm



**Patrick Scott** *Gestural Drawing* GOLD LEAF ON PAPER  
Donated by the Haverly Trust (Acquired 2001) 65x50cm



**John Noel Smith** *Knots* ETCHING [37/38]  
Acquired 2007 (101x81cm)



**Redmond Herrity** *Folding Form*  
(Acquired 2009)

CARRERA MARBLE  
30x20x10cm



**Colin Davidson**

*Nude*  
(Acquired 2002)

OIL ON LINEN  
51x61cm



**Pádraig MacMiadhacháí**

*An Old Story* OIL ON CANVAS  
(Acquired 2005) 81x81cm





**Brian Ballard** *Still Life* OIL ON CANVAS  
(Acquired 1996) 46x38cm



**Comhghall Casey** *Lambchop* OIL ON CANVAS  
Donated by the Haverly Trust (Acquired 2008) 25.5x25.5cm



**Charles Brady** *Sr. Pius's Paint Box* OIL ON CANVAS  
(Acquired 1993) 24x35cm



**Pat Harris** *White Flower II* OIL ON CANVAS  
(Acquired 1997) 60x50cm



**Maurice Quillinan** *Impending Storm* OIL ON CANVAS  
*Donated by the Artist* (Acquired 2010) 61x85cm



**Padraig McCann** *Ballymoyer Man* OIL ON LINEN  
*(Acquired 2001)* 107x76cm



**Michael Farrell** *15H 13 Saturday 15.8.'98 - Omagh* OIL ON CANVAS  
*(Acquired 1999)* 160x70cm



**Eithne Carr** *Rock Pool* OIL ON LINEN  
(Acquired 2000) 54x54cm



**Richard Croft** *Still Life with Stainless Steel and Red Markers* OIL ON CANVAS  
(Acquired 2006) 120x91cm



**Mark Rhode**  
*The Rise of Man*  
BRONZE  
(Acquired 2006)  
78x56cm



**Kate Wilson** *Finisklin* OIL ON CANVAS  
(Acquired 1999) 167x236cm





**Rowan Gillespie** *The Price of Our Freedom* BRONZE  
(Acquired 2009) 90x63x43cm



**Carolyn Mulholland** *Man with Kite* BRONZE [2/9]  
(Acquired 2006) 30x52cm



**Joseph McWilliams** *My Greenhouse* OIL ON CANVAS  
(Acquired 2006) 122x153cm



**Catherine McCormack-Green** *Spirit of a Century* BRONZE  
(Acquired 1999) 69x15cm



**Taffina Flood** *Yellow*  
(Acquired 2001) OIL ON CANVAS  
90x90cm



**John Coen**  
*Under the Apricot Tree*  
BRONZE  
(Acquired 1995)  
25x20x20cm



**Colm Brennan**  
*Kavanagh's Father*  
BRONZE [1/3]  
(Acquired 2005)  
25x25x16cm



**Barrie Cooke** *Two Lough Key Islands* OIL ON CANVAS  
(Acquired 1996) 58x51cm



**Graham Gingles** *Ghosts* MIXED MEDIUM (Acquired 2000) 14x12x120cm



**Laura Gallagher** *Life Force* OIL ON CANVAS (Acquired 2007) 161x99cm



**Taffina Flood** *Sea Wall* MIXED MEDIA (Acquired 1996) 36x50cm



**Eithne Jordan** *Landscape with sheds II* OIL ON LINEN (Acquired 2005) 97x130cm





**Margaret O'Hagan** *Space Relative* ACRYLIC ON CANVAS  
(Acquired 1992) 56x69cm



**Angela Fewer** *The Lips of Flowers Criss Crossed* OIL ON CANVAS  
(Acquired 2008) 152 X 118cm



**Gavin Hogg** *At Swim to Light* OIL AND WAX ON BOARD  
(Acquired 2004) 45x45cm



**Brian King** *Double Helix* BRONZE  
(Acquired 1998) 15x9x3cm



**Conor Walton**

*Two Lovers*  
(Acquired 2004)

OIL ON CANVAS  
183x91cm

**Melanie Le Brocquy**

*Listening to Music*

BRONZE (5/6)  
(Acquired 1996)  
20x12x15cm



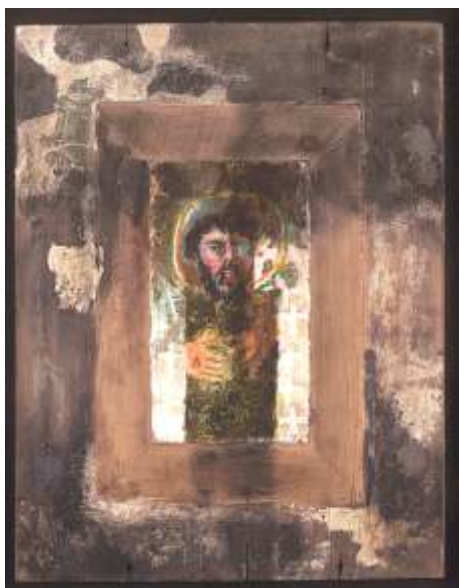
**Noel Murphy**

*Nude*  
(Acquired 2003)

OIL ON BOARD  
122 x 92cm



**Joseph McWilliams** *Icon with Glasses I*  
OIL ON GESSO BOARD  
(Acquired 2000) 50x38x3cm



**Joseph McWilliams** *Icon with Glasses III*  
OIL ON GESSO BOARD  
(Acquired 2000)  
50x38x3cm

**Joseph McWilliams** *Icon with Glasses II*  
OIL ON GESSO BOARD  
(Acquired 2000)  
50x38x3cm





**Patrick Graham** *Self-Crucifixion* OIL ON CANVAS  
 Donated by Gwen Woods (Acquired 2004) 150x100cm



**Nancy Wynne Jones** *October Road* ACRYLIC  
 (Acquired 1991) 30x42cm



**Melanie le Brocquy**  
*Three Figures on a Lawn*  
 BRONZE [6/6]  
 (Acquired 2001)  
 32x37x14cm



**Blaise Drummond**  
*Three things to do in a year*  
 OIL/GLOSS ON CANVAS  
 (Acquired 2007) 137x116cm



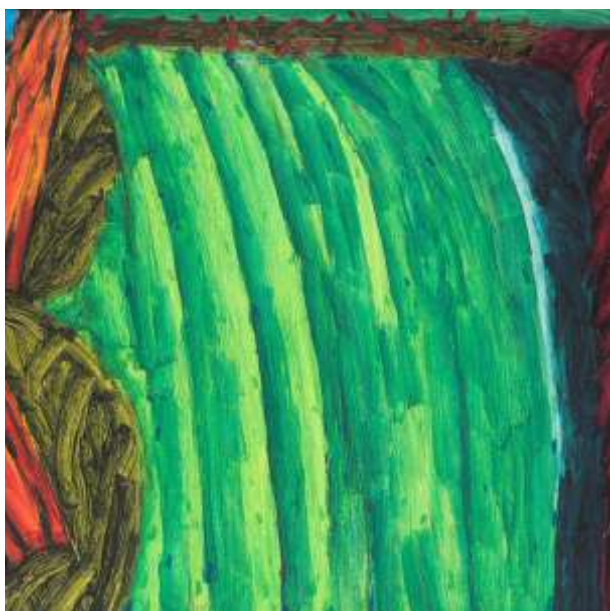
**Bettina Seitz**  
*Flowers*  
 TERRACOTTA  
 (Acquired 2003)  
 50x20cm

**Patrick O'Reilly**  
*The Silent Scream*  
 BRONZE [1/8]  
 (Acquired 2001)  
 36x65cm





**Jean Greene** *Hush - Reclining Figure* POLISHED CONCRETE CHARCOAL LIMESTONE (Acquired 2000) 22x40x94cm



**William Crozier** *The Cut Field* OIL ON CANVAS  
(Acquired 1993) 60x76cm



**Barbra Warren** *Towards Rossadillisk* OIL ON LINEN  
Donated by the Haverly Trust (Acquired 2002) 50x60cm



**John Shinnors**

*Circus Form I*  
(Acquired 1992)

OIL ON CANVAS  
25x26cm



**John Shinnors**

*Circus Form II*  
(Acquired 1992)

OIL ON CANVAS  
25x26cm



**John Shinnors**

*Circus Form III*  
(Acquired 1992)

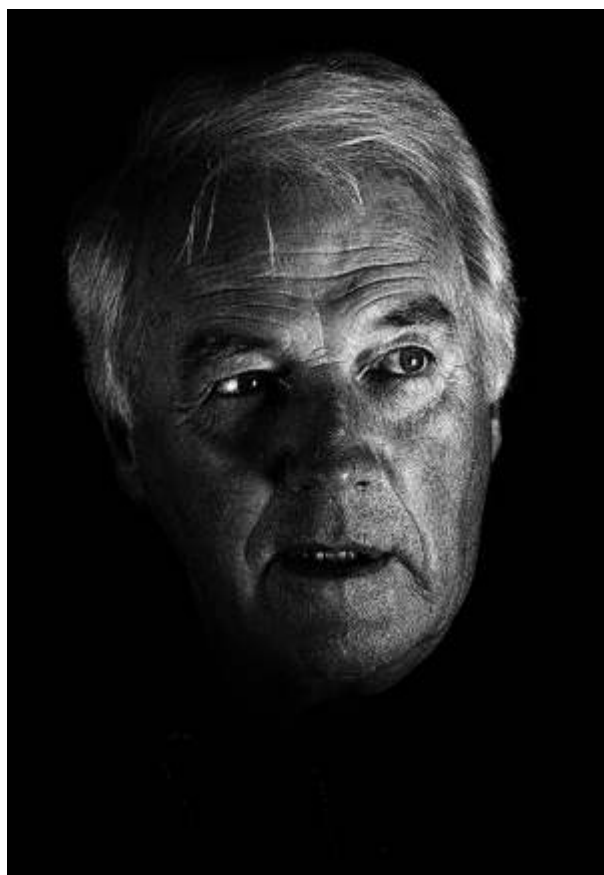
OIL ON CANVAS  
25x26cm





Fergus Ahern *Boyle Civic Art Collection Curator (1990-2010)*

**Conor Dowling** *Ad Astra*  
 PHOTOGRAPHIC COLLAGE ON HAHNEMÜLE PAPER  
 (Acquired 2011) 70x60cm  
 Donated by the Artist



Barry Feely *Boyle Civic Art Collection Curator (2011-2015)*

**Conor Dowling** *Flint*  
 PHOTOGRAPHIC PRINT ON HAHNEMÜLE PAPER  
 (Acquired 2015) 70x60cm  
 Donated by the Artist



KING HOUSE

creativeprinting  
**triestpress.ie**  
ROSCOMMON AND CASTLEREA