

KING HOUSE
EXHIBITION



BOYLE CIVIC ART COLLECTION 2024-2026



Anna Linnane *Flagbird* BRONZE
(Acquired 2007) 200x41x13cm



KING HOUSE
INTERPRETIVE GALLERIES
AND MUSEUM

INTRODUCTION

Founded in 1990, the Boyle Civic Art Collection, totalling 300 pieces of contemporary Irish artworks, is one of the most prominent civic art collections in the country. The vision from the outset has been to engage local citizens in the visual arts by providing a collection of modern Irish artworks, accessible in their immediate environment. The founders, Fergus Ahern and Barry Feely, saw no reason why a small town in the west of Ireland could not build a collection of national importance. Inherent to their vision was that this collection would be owned by the people of Boyle for the people of Boyle, making this collection of contemporary Irish artworks accessible to all. All artists in the Collection are either Irish born or Irish resident. All were living at the time their respective works were acquired.

The majority of works were acquired using the sales commission earned at Boyle Arts Festival Exhibitions 1990 to 2012. Several pieces were donated by the Haverty Trust, Friends of the National Collections of Ireland, The Contemporary Irish Art Society and the artists themselves. A number of pieces were also donated by private collectors.



Tim Shaw
Onlooker
BRONZE
(Acquired 2008)
64x27cm



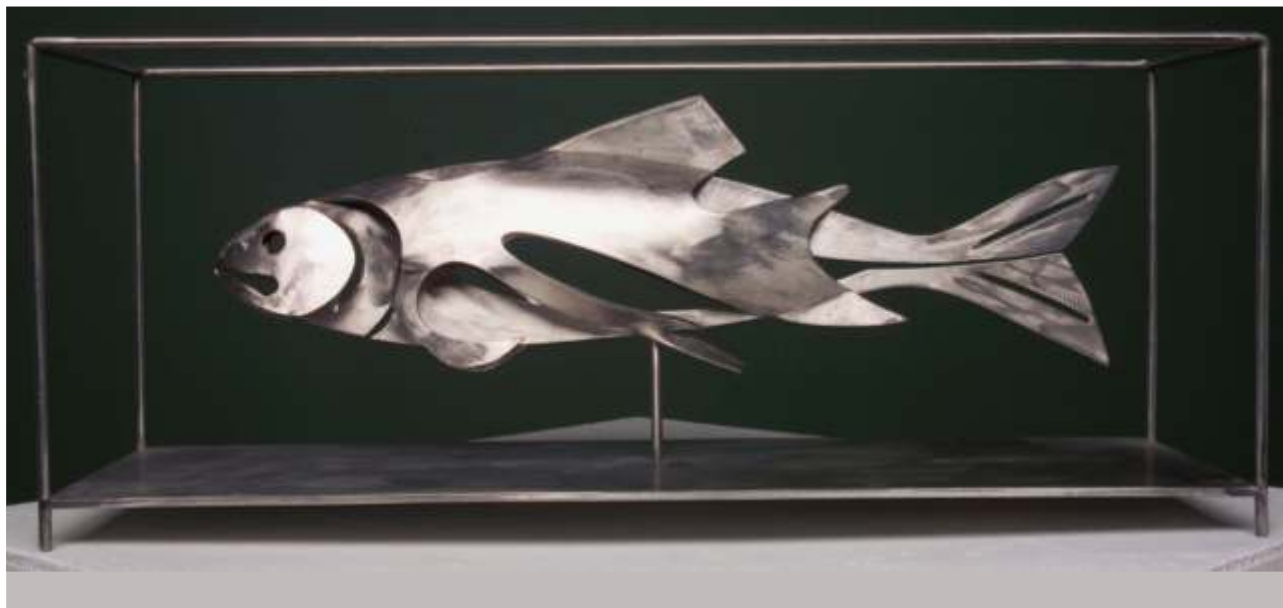
KING HOUSE
INTERPRETIVE GALLERIES
AND MUSEUM

INTRODUCTION

The Collection is maintained by the trustees for the people of Boyle and, thanks to Roscommon County Council, is housed mainly in King House where the collection is managed for exhibition and storage. Other works are located in multiple buildings in the town of Boyle.

The 2024-2026 Exhibition at King House presents 90 pieces of painting and sculpture, showcasing a broad range of media and the best of contemporary Irish artists, capturing the essence of the Boyle Civic Art Collection. It includes the first two pieces acquired in 1990 from artists Joe Hanley and John Moore – exhibited in the Main Salon on the first floor.

Boyle Civic Art Collection Trust
Chairperson: **Marian Ahern**
Secretary: **Conor Dowling**



Conor Fallon *Specimen Fish* STAINLESS STEEL [1/1] (Acquired 1994) 35x20cm



Eoin MacLochlainn *Awakening II* OIL ON CANVAS (Acquired 2008) 81x90cm



Michael O'Dea *Edain No.14* ACRYLIC & PASTEL (Acquired 1999) 76 x 57cm



Marc Reilly *Untitled* ACRYLIC
Donated by Gwen Woods (Acquired 2012) 103 x 137cm



Patrick Pye *The Baptism of Christ* ETCHING [13/50]
Donated by the artist (Acquired 2012) 79x56cm



John Breakey *Autumn Looking Towards the Spring* LITHOGRAPH
(Acquired 2000) 99 x 78cm



John Behan *Dancing Rabbis* BRONZE [1/1]
(Acquired 2000) 32 x 77cm



Neil Shawcross *Still Life*
(Acquired 2002)

OIL ON CANVAS
108 x 90cm



Joe Dunne *Winter Ballycastle*
(Acquired 2004)

EGG TEMPERA ON PAPER
57x76cm



Leo Higgins *Riverrun*
(Acquired 2005)

PAINTED BRONZE
125 x 30 x 10cm



Blaise Drummond *Wreck of Hope*
(Acquired 2005)

OIL ON CANVAS
180 x 180cm



**Katherine
Boucher Beug**

Noah's Dog III
ACRYLIC AND CHARCOAL BFK REEVES
(Acquired 2008) 77x57cm



John Moore

Heaven Comes Down
(Acquired 1990) OIL ON CANVAS
151x150cm



Michael Cullen

The Day the Painters Came
WATERCOLOUR ON HANDMADE PAPER
(Acquired 2001) 54x75cm



Imogen Stuart

Methos
(Acquired 2006) BRONZE [2/7]
46x26x5cm



Patrick O'Reilly

Bird in Moorland
(Acquired 2003)

BRONZE [1/1]
26x96 cm



Carolyn Mulholland

Figure Turning
BRONZE [1/1]
(Acquired 1993)
46x25 cm



Sarah Longley

Resting Nude
(Acquired 2008)

CHARCOAL
27 x 35cm



Joe Hanley *Between You and Me* OIL ON CANVAS
(Acquired 1990) 167x150cm



Nick Miller *Island, Lough Key* OIL ON LINEN
(Acquired 1998) 76x80cm



Felim Egan *Northern Line* ACRYLIC ON LINEN
(Acquired 2003) 120 x 120cm



Eileen McDonagh *Flight* GRANITE
(Acquired 2006)



Mary Therese Keown *The Old Town* OIL ON CANVAS (Acquired 2003) 130x33cm



Colin Davidson *Churchyard Tree* OIL ON CANVAS (Acquired 2004) 122x153cm



Breon O'Casey *Cockerel* MIXED MEDIUM (Acquired 2003) 58x60cm



Malachy Costello *Winter Field and Trees near Croghan*
OIL ON CANVAS
110 x 100cm
(Acquired 2013)



Philip Flannagan *Concrete Form with Yellow*
ACRYLIC ON LINEN
96 x 122cm
(Acquired 2006)



Alexandra Wejchert
Organic Form PLEXIGLASS
(Acquired 1991) 8x85cm



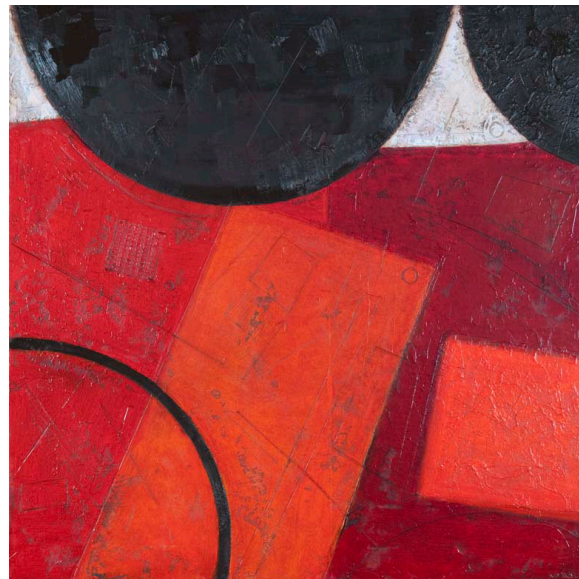
Terry McAllister [Detail] *Chesil Beach Dorset* CHARCOAL ON PAPER
Donated by Gwen Woods (Acquired 2012) 127x90cm



Willie Evesson *Persian Dream*
(Acquired 2008) OIL ON CANVAS
120x91cm



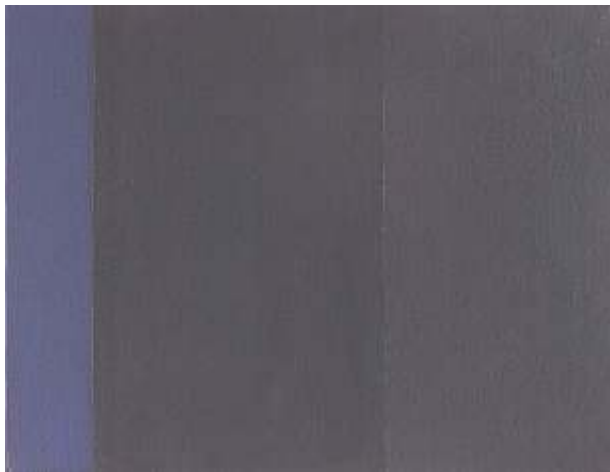
Neil Greig *Glaslough*
(Acquired 2002) OIL ON CANVAS
182 x122cm



Ludmila Koral *Influence of Red*
(Acquired 2007) MIXED MEDIA
100 x 100cm



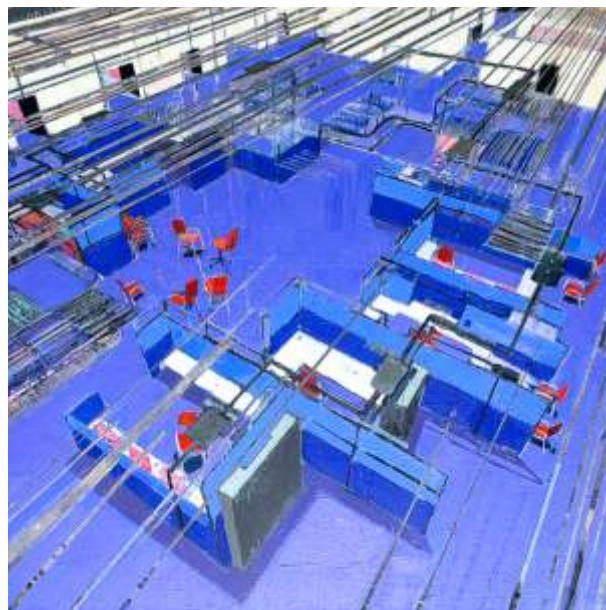
Raphael Hynes *Mandarin and Glass*
(Acquired 2005) OIL ON CANVAS
38x38 cm



Sarah Iremonger

Purple
(Acquired 1994)

OIL ON CANVAS
28x35cm



Simon McWilliams

Office Ceiling
(Acquired 2006)

OIL ON CANVAS
145x175cm



John Behan
Famine Family
COPPER AND STEEL [1/1]
(Acquired 1997)
87x40cm

Robin Buick
Aoife II BRONZE
(Acquired 1994)
50x20x20cm





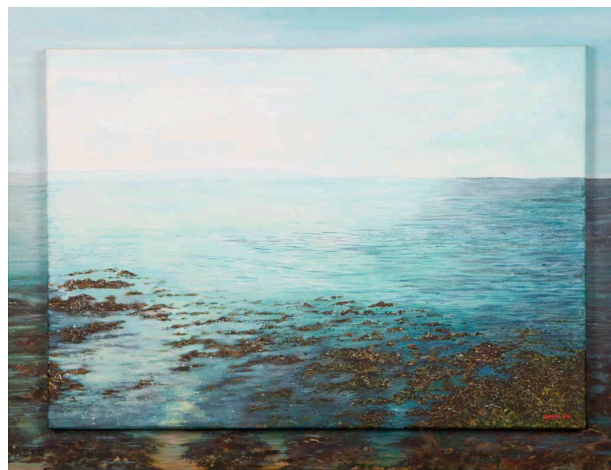
Cherith McKinstry *Farmhouse Evening* OIL ON CARD
(Acquired 2002) 30x29cm



Patrick Scott *Gestural Drawing* GOLD LEAF ON PAPER
Donated by the Haverty Trust (Acquired 2001) 65x50cm



Fionnuala d'Arcy *Still Life Landscape 1* MIXED MEDIA
(Acquired 2008) 51 x 62cm



Sue Hill *Early Morning Galway Bay*
(Acquired 2009) OIL ON CANVAS
65 x 82cm



Redmond Herrity

Folding Form
(Acquired 2009)

CARRERA MARBLE
30x20x10cm



Colin Davidson

Nude
(Acquired 2002)

OIL ON LINEN
51x61cm



Pádraig MacMiadhacháí

An Old Story
(Acquired 2005)

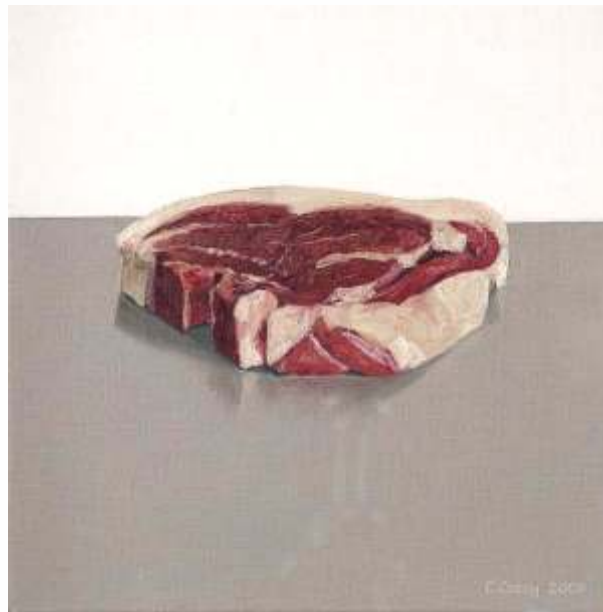
OIL ON CANVAS
81x81cm



Brian Ballard

Still Life
(Acquired 1996)

OIL ON CANVAS
46x38cm



Comhghall Casey

Donated by the Haverly Trust

Lambchop
(Acquired 2008)

OIL ON CANVAS
25.5x25.5cm



Charles Brady

Sr. Pius's Paint Box
(Acquired 1993)

OIL ON CANVAS
24x35cm



Pat Harris

White Flower II
(Acquired 1997)

OIL ON CANVAS
60x50cm



Maurice Quillinan *Impending Storm* OIL ON CANVAS
Donated by the Artist (Acquired 2010) 61x85cm



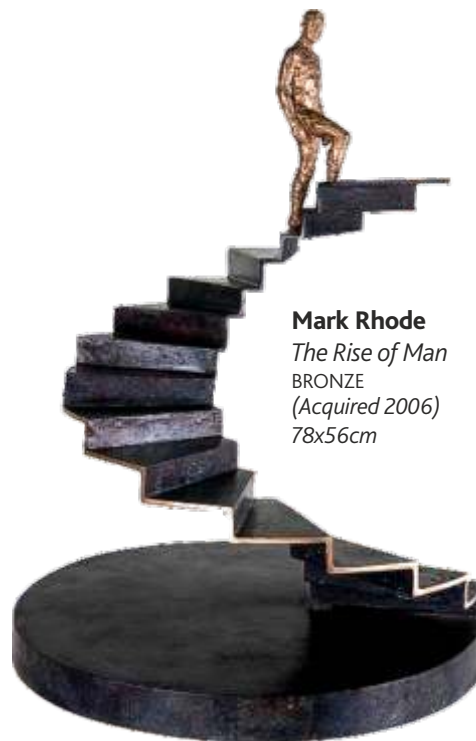
Padraig McCann *Ballymoyer Man* OIL ON LINEN
(Acquired 2001) 107x76cm



Michael Farrell *15H 13 Saturday 15.8.'98 - Omagh* OIL ON CANVAS
(Acquired 1999) 160x70cm



Bernadette Kiely *Sand & Seaweed* OIL ON BOARD
(Acquired 1999) 82 x 123cm



Mark Rhode
The Rise of Man
BRONZE
(Acquired 2006)
78x56cm



Richard Croft *Still Life with Stainless Steel and Red Markers*
OIL ON CANVAS (Acquired 2006) 120x91cm



Kate Wilson *Finisklin* OIL ON CANVAS
(Acquired 1999) 167x236cm



Rowan Gillespie *The Price of Our Freedom* BRONZE
(Acquired 2009) 90x63x43cm



Joseph McWilliams *My Greenhouse* OIL ON CANVAS
(Acquired 2006) 122x153cm



Carolyn Mulholland *Man with Kite* BRONZE [2/9]
(Acquired 2006) 30x52cm



Catherine McCormack-Green *Spirit of a Century* BRONZE
(Acquired 1999) 69x15cm



Taffina Flood

Yellow
(Acquired 2001)

OIL ON CANVAS
90x90cm



John Coen
Under the Apricot Tree
BRONZE
(Acquired 1995)
25x20x20cm



Colm Brennan
Kavanagh's Father
BRONZE [1/3]
(Acquired 2005)
25x25x16cm



Barrie Cooke

Two Lough Key Islands
(Acquired 1996)

OIL ON CANVAS
58x51cm



Graham Gingles *Ghosts* MIXED MEDIUM (Acquired 2000) 14x12x120cm



Laura Gallagher *Life Force* OIL ON CANVAS
(Acquired 2007) 161x99cm



Kate Wilson *Untitled* OIL ON CANVAS
(Acquired 2016)



Eithne Jordan *Landscape with sheds II* OIL ON LINEN
(Acquired 2005) 97x130cm



Margaret O'Hagan *Space Relative* ACRYLIC ON CANVAS
(Acquired 1992) 56x69cm



Angela Fewer *The Lips of Flowers Criss Crossed* OIL ON CANVAS
(Acquired 2008) 152 X 118cm



Niall Sheerin *Untitled* OIL ON CANVAS
(Acquired 2017)



Brian King *Double Helix* BRONZE
(Acquired 1998) 15x9x3cm



Conor Walton

Two Lovers
(Acquired 2004)

OIL ON CANVAS
183x91cm

Melanie Le Brocquy

Listening to Music
BRONZE (5/6)
(Acquired 1996)
20x12x15cm



Noel Murphy

Nude
(Acquired 2003)

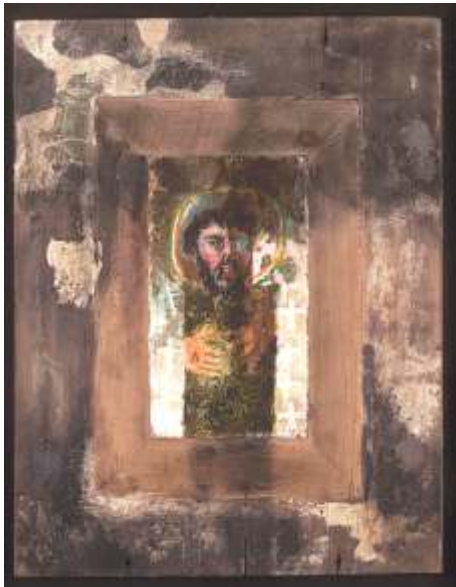
OIL ON BOARD
122 x 92cm



Joseph McWilliams *Icon with Glasses I*
OIL ON GESSO BOARD
(Acquired 2000) 50x38x3cm



Joseph McWilliams *Icon with Glasses II*
OIL ON GESSO BOARD
(Acquired 2000)
50x38x3cm



Joseph McWilliams *Icon with Glasses III*
OIL ON GESSO BOARD
(Acquired 2000)
50x38x3cm



Patrick Graham *Self-Crucifixion* OIL ON CANVAS
Donated by Gwen Woods (Acquired 2004) 150x100cm



Jenny Jessop *Leaving* OIL ON CANVAS
(Acquired 2023)



Melanie le Brocquy
Three Figures on a Lawn
BRONZE [6/6]
(Acquired 2001)
32x37x14cm



Blaise Drummond
Three things to do in a year
OIL/GLOSS ON CANVAS
(Acquired 2007) 137x116cm



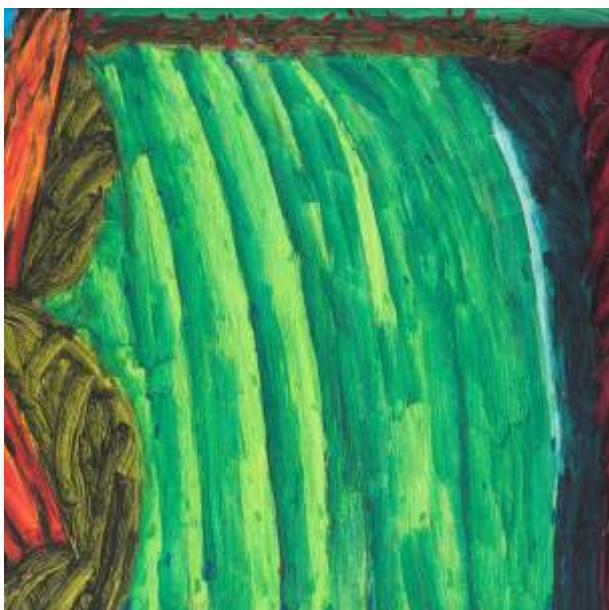
Bettina Seitz
Flowers
TERRACOTTA
(Acquired 2003)
50x20cm

Patrick O'Reilly
The Silent Scream
BRONZE [1/8]
(Acquired 2001)
36x65cm





Jean Greene *Hush - Reclining Figure* POLISHED CONCRETE CHARCOAL LIMESTONE (Acquired 2000) 22x40x94cm



William Crozier *The Cut Field* OIL ON CANVAS (Acquired 1993) 60x76cm



John Shinnors

Circus Form I
(Acquired 1992)

OIL ON CANVAS
25x26cm



John Shinnors

Circus Form II
(Acquired 1992)

OIL ON CANVAS
25x26cm

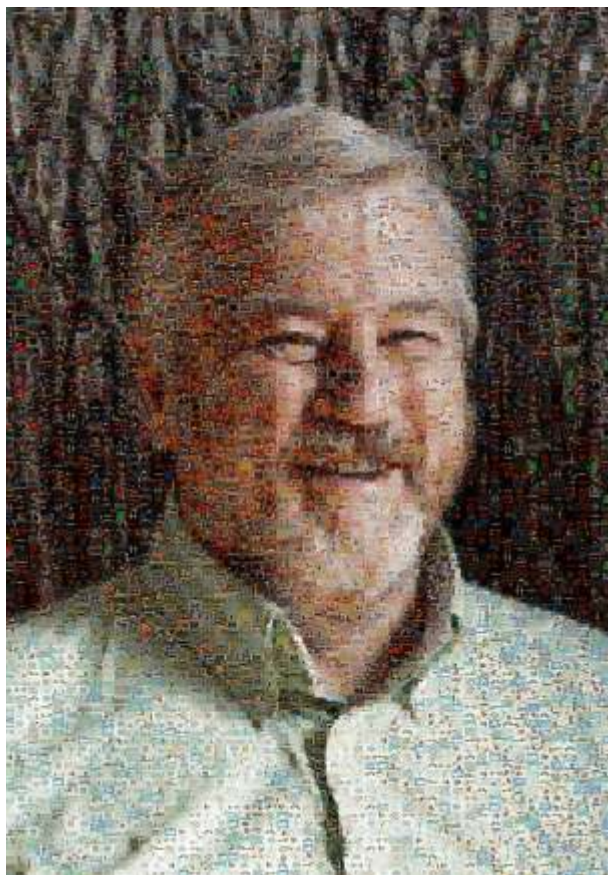


John Shinnors

Circus Form III
(Acquired 1992)

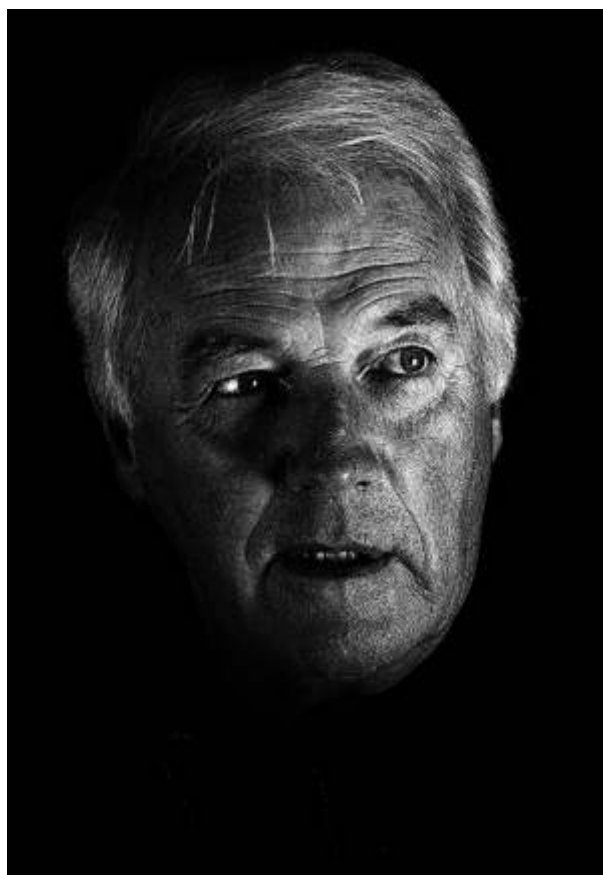
OIL ON CANVAS
25x26cm

BOYLE CIVIC ART COLLECTION 2024-2026



Fergus Ahern *Boyle Civic Art Collection Curator (1990-2010)*

Conor Dowling *Ad Astra*
PHOTOGRAPHIC COLLAGE ON HAHNEMÜLE PAPER
(Acquired 2011) 70x60cm
Donated by the Artist



Barry Feely *Boyle Civic Art Collection Curator (2011-2015)*

Conor Dowling *Flint*
PHOTOGRAPHIC PRINT ON HAHNEMÜLE PAPER
(Acquired 2015) 70x60cm
Donated by the Artist



KING HOUSE

INTERPRETIVE GALLERIES
AND MUSEUM


creativeprinting

triestpress.ie
ROSCOMMON  CASTLEREA